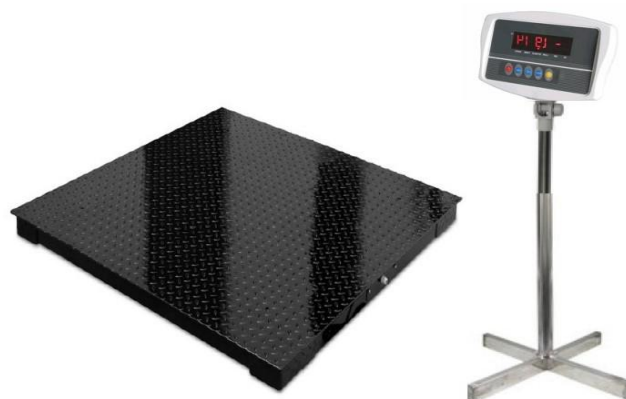


**FM52 E** rewrites the requirements of being a powerful indicator. It contains nearly all the features and functions that static and simple dynamic industrial weighing applications need. Equipped with a 24-bit Low-Noise  $\Delta$ - $\Sigma$  Analog-to-Digital Converter, special linearity compensation method plus all other state-of-the-art technologies applied. These enable **FM52 E** to provide fast, stable, and almost error-free weighing results anytime when needed. True 6-wire load cell compensation system, easy drive up to 8 x 350  $\Omega$ , runs at 1.6 million internal counts plus all the built-in functions, these are the foundation that makes **FM52 E** good for nearly all static and mid to low-speed dynamic weighing applications.

### FEATURES:

- Multi Functions Indicator
- Built-in Real Time Clock
- 6 x 1-Inch Numeric Digits
- Calibration Password Control
- Free Capacity and Division Setting
- Tracking Bar to Show Applied & Remaining Capacity
- 24 Bit Sigma to Delta ( $\Sigma$ - $\Delta$ ) Analog-To-Digital Converter
- Power Up To 4 X 350 $\Omega$  Load Cells or 8 X 700 $\Omega$  Load Cells
- Dual Power Source: - By Built-In Rechargeable Battery or External Power Adaptor
- Lower Power Consumption. Battery Operating Time = 200 Hours plus
- Backlight, Built-In Rechargeable Battery, External Power Adaptor and Stainless Steel Wall/Desk Mount Holder Included



### FUNCTIONS:

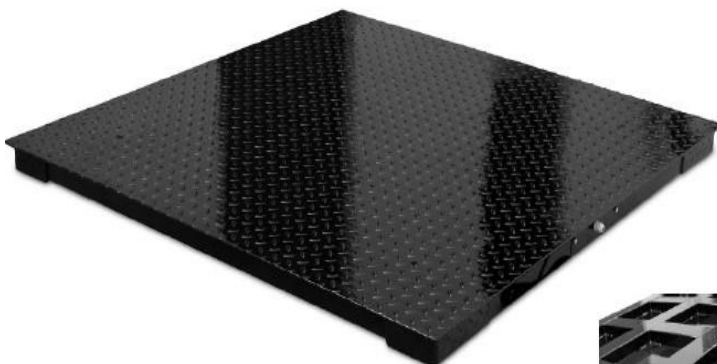
#### USER SELECTABLE PARAMETERS:

- |   |   |
|---|---|
| <ul style="list-style-type: none"> <li>• 5 x Filter Intensity Mode</li> <li>• 3 x Backlight Mode</li> <li>• 2 x Selectable Auto Tare Function</li> <li>• 5 x RS232 Data Output Baud Rate</li> <li>• 7 x Initial Zero Range</li> <li>• 6 x Manual Zero Range</li> <li>• 4 x Auto Zero Tracking Range</li> <li>• 3 x Check weighing Buzzer Output Mode</li> </ul> | <ul style="list-style-type: none"> <li>• Weighing</li> <li>• Check weighing</li> <li>• Animal Weighing</li> <li>• Piece Count</li> <li>• Pre-set Tare</li> <li>• Memory Accumulation</li> <li>• Kg/lb Conversion Function plus 2 x User Programmable Weight Units</li> <li>• Auto Initial Zero Tracking    Manual Zero</li> </ul> |
|---|---|

Model No.	Capacity (kg)	Readability (kg)	Platform Dimension (mm)
FM52 E-4252	30	5g	420 x 520mm
FM52 E-4252	60	10g	
FM52 E-4252	60	10g	
FM52 E-4252	300	50g	
FM52 E-0506	30	5g	500 x 600mm
FM52 E-0506	60	10g	
FM52 E-0506	150	20g	
FM52 E-0506	300	50g	
FM52 E-0608	60	5g	600 x 800mm
FM52 E-0608	150	10g	
FM52 E-0608	300	20g	
FM52 E-0608	500	50g	
Operating Environment	0~40°C (32~104°F) Non Condensing R.H. <85%		

**XSB** is designed & built to meet a wide range of heavy traffic & high resolution industrial applications up to 6000kg.

It delivers un-exceptional reliability, accuracy and skin smooth performance to meet weighing, batching and counting needs.



### Specifications:

Model No	Platform Size (mm)		Load Cell		
XSB-0808 (A, N)	800 x 800		Type: - <ul style="list-style-type: none"><li>A: - OIML / NTEP C3 approved</li><li>N: - FM Special Grade Assignment: 4 x 500kg for Max = 1T</li><li>4 x 1000kg for Max = 2T</li><li>4 x 1500kg for Max = 3T</li><li>4 x 2000kg for Max = 5T</li><li>4 x 3000kg for Max = 6T</li></ul>		
XSB-0810 (A, N)	800 x 1000				
XSB-1010 (A, N)	1000 x 1000				
XSB-1012 (A, N)	1000 x 1200				
XSB-1212 (A, N)	1200 x 1200				
XSB-1215 (A, N)	1200 x 1500				
XSB-1515 A, N)	1500 x 1500				
XSB-1520 (A, N)	1500 x 2000				
XSB-2020 (A, N)	2000 x 2000				
Nominal Capacity (Max)	1T	2T		5T	6T
Adjusted Eccentric Accuracy (kg)	0.05	0.1	0.2	0.5	0.5

### Quality, Structural Strength & Accuracy are Safeguarded by:

- Material Grade
- Material Thickness
- Tooling & Method used to handle Material Cutting, Blending ... etc.
- Smart & CNC Made Oversized Heavy Duty Load Cell Supporting & Mounting Blocks
- Strict Construction Accuracy Standards Applied
- Smart & High-Quality Stainless Steel Junction Box used.
- OIML / NTEP C3 Approved or FM Special Grade Load Cell
- High-Density Channel Frame Allocation
- High-Quality Epoxy Coating

### Order Code:-

Model No.

- Nominal Capacity - Load Cell Type.  
Examples -
- XSB-1010-1T-A for platform size = 1 x 1m; nominal capacity = 500kg; with approved load cells.
- XSB-1215-2T-N for platform size = 1.2 x 1.5m; nominal capacity = 2000kg; with FM Special Grade load cells

	<b>Global Asia Trading Company</b>
	Local agent of Fidelity Measurement Co. Ltd.,
	Website : <a href="http://www.gatcobd.com">www.gatcobd.com</a>
	E-Mail : <a href="mailto:info@gatcobd.com">info@gatcobd.com</a>
	Contact : +88 01711 531 809